



Winter Series 2009

Sailing Instructions

17 May – 23 August

Waitemata Harbour, Auckland

The Organising Authority is **Royal Akarana Yacht Club**
The Landing, Okahu Bay, PO Box 42004, Orakei, Auckland 1745
Ph + 64 (0)9 524 9945, Fax + 64 (0)9 520 1380, Email tash@rayc.org.nz www.rayc.org.nz

1.0 RULES

- 1.1 The regatta will be governed by the rules as defined in *The Racing Rules of Sailing*.
- 1.2 The Yachting New Zealand Safety Regulations Part 1, shall apply for dinghies and open boats.
- 1.3 The YNZ Safety Regulations Part II, Category 5 shall apply for keelboats.
- 1.4 The YNZ Safety Regulations Part V, Category C shall apply to trailer yachts.
- 1.5 The YNZ Sport Boat Regulations Part VI Category B shall apply for all sport boats.
- 1.6 The Class Safety Rules shall apply to all Platu 25 yachts.
- 1.7 Class Rules apply for the Farr 727, Elliott 5.9, Platu 25 & Flying Fifteen Classes.
- 1.8 Under rule 87, rules B.2.2 and C.5.1 of the 2008 International Platu 25 class rules are changed as follows:

B.2.2 *All masts shall carry the Platu 25 class mast sticker* has been deleted.

C.2.2 *Weights* is deleted

C.5.1 *Mandatory Safety Equipment: Fire Extinguisher* is deleted.

C.5.1 is re written to say:

Engines: *An engine on board is not compulsory.*

However if an engine is fitted it shall be a minimum 21 kg without fuel. The minimum nominal power of the engine, if fitted is 2.5 hp.

If an engine is not fitted onboard then the boat shall carry 21kg of corrector weights, attached to the engine bracket in the engine bay.

The engine bracket shall be bolted at standard position, if there is no engine bracket, 1.5 kg of correcting weights must be carried.

Motor well, cover plate and hatches: *The motor well cover plate shall be removable at all times. A hole may be drilled on the cover plate. Fairing the cover plate is permitted. Engine well and engine locker covers may be waterproofed using any method from the interior.*

The space between the engine well and the engine locker may be closed non permanently.

D.5.1 *Bilge pump and its 2m pipe shall be installed as per building specifications* is deleted.

2.0 Notices to Competitors

Notices to competitors will be posted on the official notice board located in the RAYC foyer.

3.0 Changes to Sailing Instructions

Any change to the Sailing Instructions will be posted before 1000 hours on the day it will take effect, except that any change to the schedule of races will be posted by 1800 hours on the day before it will take effect.

4.0 Signals Made Ashore

4.1 Signals made ashore will be displayed on a pole erected on the seawall in front of RAYC Clubrooms.

4.2 When flag AP is displayed ashore, '1 minute' is replaced with 'not less than 60 minutes' in race signal, AP.

5.0 Schedule

5.1 Briefings:

A daily briefing will be held at 1200hours each race day at RAYC.

If you cannot make the briefing, contact 'Akarana Patrol' on VHF Channel 77 for confirmation of the designated race area for that day.

5.2 Dates of racing:

Race Day 1	Sunday 17 May
Race Day 2	Sunday 14 June
Race Day 3	Sunday 28 June
Race Day 4	Sunday 12 July
Race Day 5	Sunday 26 July
Race Day 6	Sunday 9 August
Race Day 7	Sunday 23 August

5.2 Schedule of racing:

- a) For all race days up to 2 back to back races are scheduled for each division.
- b) The scheduled time of the first warning signal for the first division in Race 1 will be 1255 hours.
- c) Division starts may be combined at the Race officer's discretion.



5.3 On each race day the firsts warning signal for any sequence of starts will not be made after 1600 hours.

6.0 Class Flags

6.1 Division's and Divisional Flags

Division	Class	Flag
B	Open Division	Green & White
C	SR26	Yellow
D	Farr 727	Green
E	Elliott 5.9	Purple
F	Flying Fifteen	Flying Fifteen
I	All Catamarans, F18's, Hobie 16's, Skiffs etc	Pink/ F18
P	Platu 25	White

6.2 Divisions may be added and/ or adjusted depending on entries received.

7.0 Racing Areas

Attachment A shows the location of the racing areas.

It is the intention of the Race Committee to run all racing on the west of Bean Rock, unless wind directions make this impossible and then racing will be held east of Bean Rock. The race area will be confirmed each race day at the 1200hours briefing.

8.0 The Courses

8.1 The diagrams in Attachment B show the courses, including the order in which marks are to be passed, and the side on which each mark is to be left.

8.2 No later than the warning signal, the race committee signal boat will display the approximate compass bearing from Mark 2 to Mark 1.

9.0 Marks

9.1 Marks 1, 2, and 3 will be yellow conical buoys.

Mark 1A will be an orange teardrop buoy

9.2 New marks, as provided in instruction 12.1, will be black cylindrical buoys.

9.3 The starting and finishing marks will be a staff displaying an orange flag on the committee boat at one end and an orange buoy with black markings at the other end.

10.0 Areas that are Obstructions; Fairway Marks

10.1 The following are Fairway Marks, which must be passed on the main navigation side of the channel:

Orakei Sewer Outlet Beacon	Keep north of
Doris Rock Beacon & Bean Rock Light house	Keep north of
Devonport Cable Marks	Keep south of
Browns Island Beacon	Keep north of

10.2 Boats while racing will pass on the main navigation channel side of all mooring buoys and moored boats in or adjacent to the designated mooring areas as shown on chart NZ5322. These areas shall be treated as an obstruction. Boats while racing shall not sail south of a line being an extension of the permanent wave-break at Okahu Bay.

11.0 The Start

11.1 The starting line will be between a staff displaying an orange flag on the starting mark at the starboard end and the port end starting mark.

11.2 Boats whose warning signal has not been made shall avoid the starting area during the starting sequence for other races.

11.3 A boat starting later than four minutes after her starting signal will. This changes Rule A4.

12.0 Change of the Next Leg of the Course

12.1 To change the next leg of the course, the race committee will lay a new mark (or move the finishing line) and remove the original mark as soon as practicable. When in a subsequent change a new mark is replaced, it will be replaced by an original mark.

12.2 Except at a gate, boats shall pass between the race committee boat signalling the change of next leg and the nearby mark.

13.0 The Finish

The finishing line will be between a staff displaying an orange flag on the finishing mark and the finishing mark at the other end.

14.0 Penalty System

For the all divisions rule 44.1 is changed so that the Two-Turns Penalty is replaced by the One-Turn Penalty.

15.0 Time Limits and Target Times

15.1 Time limits and target times in minutes for the first boat are as follows:

Class	Time Limit	Mark 1 Time Limit	Target Time
All Classes	90	30	50

If no boat has passed Mark 1 within the Mark 1 time limit, the race will be abandoned. Failure to meet the target time will not be grounds for



redress. This changes rule 62.1(a).

- 15.2 Boats failing to finish within 15 minutes after the first boat in their division sails the course and finishes will be scored Did Not Finish. This changes rules 35, A4 and A5.

16.0 Protests and Requests for Redress

- 16.1 Protest forms are available at the race office. Protests and requests for redress or reopening shall be delivered there within the appropriate time limit.
- 16.2 For each division, the protest time limit is 1200 noon the Monday after the race day.
- 16.3 Notices will be posted no later than 30 minutes after the protest time limit to inform competitors of hearings in which they are parties or named as witnesses. Hearings will be held in the protest room, located at RAYC, beginning at the day and time posted.
- 16.4 Notices of protests by the race committee or protest committee will be posted to inform boats under rule 61.1(b).
- 16.5 Breaches of instructions 4.2, 14, and 18 will not be grounds for a protest by a boat under rule 60.1(a). This changes rule 60.1(a). Penalties for these breaches may be less than disqualification if the protest committee so decides. The scoring abbreviation for a discretionary penalty imposed under this instruction will be DPI.
- 16.6 On the last scheduled day of racing a request for reopening a hearing shall be delivered
- within the protest time limit if the requesting party was informed of the decision on the previous day;
 - no later than 30 minutes after the requesting party was informed of the decision on that day.
- This changes rule 66.
- 16.7 On the last scheduled day of racing a request for redress based on a protest committee decision shall be delivered no later than 30 minutes after the decision was posted. This changes rule 62.2.

17.0 SCORING

- 17.1 Six races are required to be completed to constitute a series.
- 17.2
- When fewer than 8 races have been completed, a boat's series score will be the total of her race scores.
 - When from 8 to 12 races have been completed, a boat's series score will be the total of her race scores excluding her worst score.
 - When 12 or more races have been completed, a boat's series score will be the total of her race scores excluding her two worst scores.

18.0 Safety Regulations

A boat that retires from a race should notify the race committee as soon as possible, either directly or via VHF channel 77. Call sign 'Akarana Patrol'.

19.0 Equipment and Measurement Checks

A boat or equipment may be inspected at any time for compliance with the class rules and sailing instructions. On the water, a boat can be instructed by a race committee measurer to proceed immediately to a designated area for inspection.

20.0 Official Boats

Official boats will be marked with an RAYC pennant.

21.0 Trash Disposal

Boats shall not put trash in the water.

22.0 Radio Communication

- 22.1 A boat shall neither make radio transmissions while racing nor receive radio communications not available to all boats. This restriction also applies to mobile telephones.
- 22.2 All radio communications between competitors and the Race Committee shall be through VHF Channel 77, unless the Race Officer advises otherwise.

23.0 Prizes

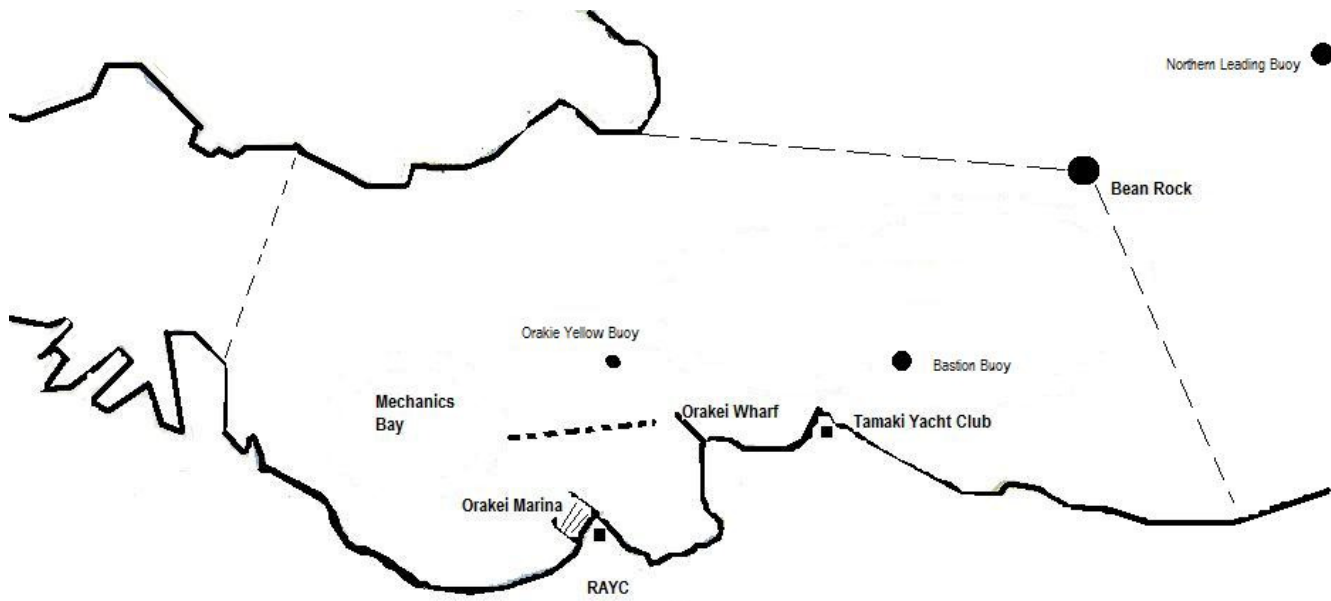
- 23.1 The following prizes will be awarded:
For each division on laid course race days prizes are presented based on the total points of those races.
A minimum of 5 boats must race for a prize to be awarded in that division.
- 23.2 Series Prize Giving will be on the last race day Sunday 24 August from approximately 1800 hours.

24.0 Disclaimer of Liability

Competitors participate in the regatta entirely at their own risk. See rule 4, Decision to Race. The organizing authority will not accept any liability for material damage or personal injury or death sustained in conjunction with or prior to, during, or after the regatta.

ATTACHMENT A – Racing Area

Racing will normally be held in the area within the dotted lines. This may be extended at the Race Officers discretion due to circumstances such as wind direction. A briefing will be held at 1200 hours each race day to confirm the race area with the fleet.



Attachment A – Laid Courses

All rounding marks left to port

Course Number to be sailed will be signalled on the start boat by flying the appropriate numeral pennant not later than the warning signal.

Divisions F (Flying Fifteens)

Course 1	(WWL-WWL)	Start – 1 – 1A – 3 – 1 – 1A – Finish
Course 2	(WWL-WWL-Beat)	Start – 1 – 1A – 3 – 1 – 1A – 3 – Finish
Course 3	(WWL-WWL-WWL)	Start – 1 – 1A – 3 – 1 – 1A – 3 – 1 – 1A – Finish
Course 4	(WWL-WWL-WWL-Beat)	Start – 1 – 1A – 3 – 1 – 1A – 3 – 1 – 1A – 3 – Finish
Course 5	(Tri-WWL)	Start – 1 – 1A – 2 – 3 – 1 – 1A – Finish
Course 6	(Tri-Tri-WWL)	Start – 1 – 1A – 2 – 3 – 1 – 1A – 2 – 3 – 1 – 1A – Finish

Division I (Cat's/ Skiffs etc)

Course 1 & 5	(WWL-WWL-WWL)	Start – 1 – 1A – 3 – 1 – 1A – 3 – 1 – 1A – Finish
Course 2	(WWL-WWL-WWL-Beat)	Start – 1 – 1A – 3 – 1 – 1A – 3 – 1 – 1A – 3 – Finish
Course 3 & 6	(WWL-WWL-WWL-WWL)	Start – 1 – 1A – 3 – 1 – 1A – 3 – 1 – 1A – 3 – 1 – 1A – Finish
Course 4	(WWL-WWL-WWL-WWL-Beat)	Start – 1 – 1A – 3 – 1 – 1A – 3 – 1 – 1A – 3 – 1 – 1A – 3 – Finish

All other Divisions

Course 1 & 5	(WWL-WWL)	Start – 1 – 1A – 3 – 1 – 1A – Finish
Course 2	(WWL-WWL-Beat)	Start – 1 – 1A – 3 – 1 – 1A – 3 – Finish
Course 3 & 6	(WWL-WWL-WWL)	Start – 1 – 1A – 3 – 1 – 1A – 3 – 1 – 1A – Finish
Course 4	(WWL-WWL-WWL-Beat)	Start – 1 – 1A – 3 – 1 – 1A – 3 – 1 – 1A – 3 – Finish

Finish Courses 2 & 4

