



Winter Series 2009

Notice of Race

17 May – 23 August

Waitemata Harbour, Auckland

The Organising Authority is **Royal Akarana Yacht Club**
The Landing, Okahu Bay, PO Box 42004, Orakei, Auckland 1745
Ph + 64 (0)9 524 9945, Fax + 64 (0)9 520 1380, Email tash@rayc.org.nz www.rayc.org.nz

1.0 RULES

- 1.1 The regatta will be governed by the rules as defined in *The Racing Rules of Sailing*.
- 1.2 The Yachting New Zealand Safety Regulations Part 1, shall apply for dinghies and open boats.
- 1.3 The YNZ Safety Regulations Part II, Category 5 shall apply for keelboats.
- 1.4 The YNZ Safety Regulations Part V, Category C shall apply to trailer yachts.
- 1.5 The YNZ Sport Boat Regulations Part VI Category B shall apply for all sport boats.
- 1.6 The Class Safety Rules shall apply to all Platu 25 yachts.
- 1.7 Class Rules apply for the Farr 727, Elliott 5.9, Platu 25 & Flying Fifteen Classes.
- 1.7 Under rule 87, rules B.2.2 and C.5.1 of the 2008 International Platu 25 class rules are changed as follows:
 - B.2.2 *All masts shall carry the Platu 25 class mast sticker* has been deleted.
 - C.2.2 *Weights* is deleted
 - C.5.1 *Mandatory Safety Equipment: Fire Extinguisher* is deleted.
 - C.5.1 is re written to say:

Engines: *An engine on board is not compulsory.*

However if an engine is fitted it shall be a minimum 21 kg without fuel. The minimum nominal power of the engine, if fitted is 2.5 hp. If an engine is not fitted onboard then the boat shall carry 21kg of corrector weights, attached to the engine bracket in the engine bay. The engine bracket shall be bolted at standard position, if there is no engine bracket, 1.5 kg of correcting weights must be carried.

Motor well, cover plate and hatches: *The motor well cover plate shall be removable at all times. A hole may be drilled on the cover plate. Fairing the cover plate is permitted. Engine well and engine locker covers may be waterproofed using any method from the interior. The space between the engine well and the engine locker may be closed non permanently.*

D.5.1 *Bilge pump and its 2m pipe shall be installed as per building specifications* is deleted.

2.0 ELIGIBILITY AND ENTRY

- 2.1 The regatta is open to all boats not limited to but including the Flying Fifteen, Elliott 5.9, F18, Farr 727, Platu 25 and SR26 classes.
- 2.2 Eligible boats may enter by completing the attached form and sending it, together with the required fee, to
The Sailing Administrator
Post: PO Box 42004, Orakei, Auckland, Email: tash@rayc.org.nz, Fax: 09 520 1380
or by using the RAYC post box in the Clubhouse foyer.
- 2.3 Advance entries will be accepted until the normal closing date of 1200hrs on Friday 16 May, 2008
- 2.4 Individual Race entries should be made on the Friday before that race, except that a boat that is not previously entered may do so by informing the Race Officer and starting the race. By starting a boat acknowledges that an entry fee is payable. If no entry fee is paid before or on the day of racing no results will be published for that boat and the boat will be ineligible for prizes from that Race Day. Individual race entrants are ineligible for points towards the series.
- 2.5 To be eligible to compete in this event each competitor shall be a financial member of a club recognised by the competitors national authority.

3.0 FEES

Required fees are as follows:

<i>Members Series</i>	\$100
<i>Non – Members Series</i>	\$140
<i>Members Single Race</i>	\$25
<i>Non-Members Single Race</i>	\$35

4.0 SCHEDULE

4.1 Dates of racing:

Race Day 1	Sunday 17 May
Race Day 2	Sunday 14 June
Race Day 3	Sunday 28 June
Race Day 4	Sunday 12 July
Race Day 5	Sunday 26 July
Race Day 6	Sunday 9 August
Race Day 7	Sunday 23 August

4.2 Schedule of racing:

- For all race days up to 2 back to back races are scheduled for each division.
- The scheduled time of the first warning signal for the first division in Race 1 will be 1255 hours.
- Divisions may be combined at the Race officer's discretion.

4.3 Division's and Divisional Flags

Division	Class	Flag
B	Open Division	Green & White
C	SR26	Yellow
D	Farr 727	Green
E	Elliott 5.9	Purple
F	Flying Fifteen	Flying Fifteen
I	All Catamarans, F18's, Hobie 16's, Skiffs etc	Pink/ F18
P	Platu 25	White

4.4 Divisions may be added and/ or adjusted depending on entries received.

4.5 On each race day the firsts warning signal for any sequence of starts will not be made after 1600 hours.

5.0 SAILING INSTRUCTIONS

The sailing instructions will be available after 1700hrs on Monday 4 May at the RAYC.

6.0 VENUE

Attachment A shows the location of the racing areas.

7.0 THE COURSES

The courses to be sailed will be as follows: Windward/ Leeward's.

8.0 PENALTY SYSTEM

For all classes rule 44.1 is changed so that the Two-Turns Penalty is replaced by the One-Turn Penalty.

9.0 SCORING

9.1 Six races are required to be completed to constitute a series.

9.2 (a) When fewer than 8 races have been completed, a boat's series score will be the total of her race scores.

(b) When from 8 to 12 races have been completed, a boat's series score will be the total of her race scores excluding her worst score.

(c) When 12 or more races have been completed, a boat's series score will be the total of her race scores excluding her two worst scores.

10.0 RADIO COMMUNICATION

Except in an emergency, a boat shall neither make radio transmissions while racing nor receive radio communications not available to all boats. This restriction also applies to mobile telephones.

11.0 PRIZES

Prizes will be given as follows:

For each Division that has 5 or more boats on the start line, a bottle of rum will be awarded to the first placed boat overall on the day's points as follows:

Flying Fifteen, Elliott 5.9, F18 & Platu 25	Line
Farr 727, SR26, Open Division	Handicap

12.0 DISCLAIMER OF LIABILITY

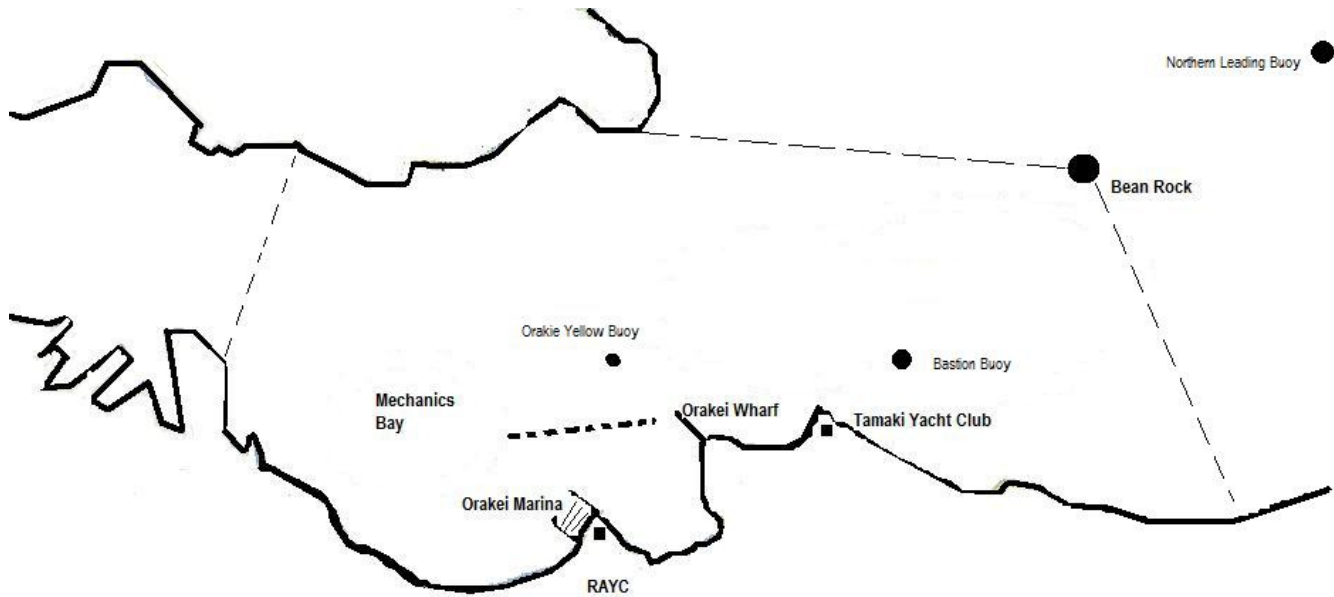
Competitors participate in the regatta entirely at their own risk. See rule 4, Decision to Race. The organizing authority will not accept any liability for material damage or personal injury or death sustained in conjunction with or prior to, during, or after the regatta.

13.0 FURTHER INFORMATION

For further information please contact The Sailing Administrator by email tash@rayc.org.nz or phone 09 524 9945.

ATTACHMENT A – Racing Area

Racing will normally be held in the area within the dotted lines. This may be extended at the Race Officers discretion due to circumstances such as wind direction.



Entry Form

RAYC Winter Series

17 May 2009 – 23 August 2009

Organising Authority:
Royal Akarana Yacht Club
 The Landing, Okahu Bay
 PO Box 42 004, Orakei, Auckland 1745

Please accept our entry: refer to Clause 2 of Notice of Race

Boat Name:		Sail Number:	
Skipper/ Owners Name:		Yacht Club:	
Tel Work:	Tel Home:	Mobile:	
Email:			
Designer/ Class:	LOA:	Hull Colour:	

Series Entry			
<input type="checkbox"/> Members	\$100.00	<input type="checkbox"/> Non-Members	\$140.00
Single Race Day Entry			
Division Entered: _____		Race Date: _____	
<input type="checkbox"/> Members	\$25.00	<input type="checkbox"/> Non-Members	\$35.00
<input type="checkbox"/> CASH <input type="checkbox"/> CHEQUE <input type="checkbox"/> EFTPOS		<input type="checkbox"/> CREDIT CARD NUMBER: _____	EXPIRY DATE: _____
<input type="checkbox"/> DIRECT DEBIT RAYC A/C NUMBER 020238 0022947 00 DATE PAID: _____			

Declaration:
 I agree to be bound by the Racing Rules of Sailing and all other rules that govern this event. I understand that yacht racing has inherent risks and dangers that are beyond the control of the organizing authority. I understand that neither the organising authority and its officers, members and servants nor other persons assisting with the conduct of the regatta accept any responsibility in respect of any injury or loss to person or property that may be sustained by reason of participation in the regatta or howsoever arising in connection with the regatta. I agree to the use of my photograph(s) and other relevant information in any event publicity and in the ongoing promotion of New Zealand yachting. I agree to the Organising Authority and Yachting New Zealand holding the above information for the general administration and well-being of the sport, and for them to retain, use and disclose the information to affiliated organisations and any other persons or organisations that Yachting New Zealand believes will further the interests and objectives of Yachting New Zealand. I acknowledge my right to access to and correction of this information. The consent is given in accordance with the Privacy Act 1993.

Skippers Signature: _____ Date: _____

Series Entries close 1200 hours Friday 16 May, 2009

Fax, Email and Post entries will be accepted up till the cut-off time. For the entry to be valid it must be accompanied by the entry fee or credit card number

OFFICE USE ONLY		
<input type="checkbox"/> Payment Received	<input type="checkbox"/> Sailing Instructions Issued	<input type="checkbox"/> Entered in Database